

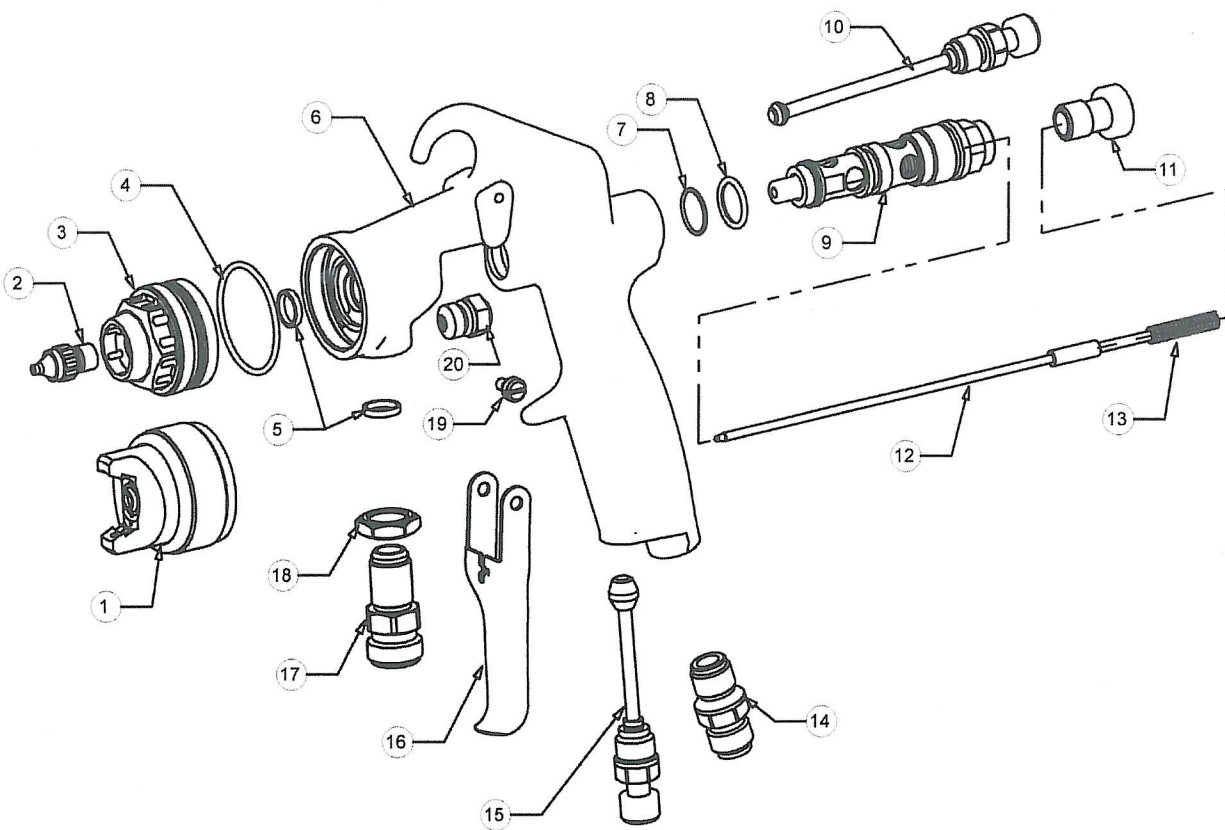
C.A. Technologies *FE-Line Fine Finish*

PRODUCT INFORMATION



AIR CAPS, FLUID ORIFICES, AND NEEDLES AVAILABLE FOR *FE-Line Fine Finish* GUN

AIR CAP	APPROX. CFM	MAX GUN INLET PRESS. PSI FOR HVLP	ORIFICE PART # AND SIZE	NEEDLE
23-1308	13.5	29	33-0208 0.8mm (.022")	40-1808
23-1310	13.5	29	33-0210 1.0 mm (.040")	40-1810
23-1312	13.5	29	33-0212 1.2 mm (.046")	40-1810
23-1313	13.5	29	33-0213 1.3 mm (.052")	40-1813
23-1314	13.5	29	33-0214 1.4 mm (.055")	40-1813
23-1315	13.5	29	33-0215 1.5 mm (.059")	40-1815
23-1317	13.5	29	33-0217 1.7 mm (.070")	40-1817



ITEM NO.	PART NO.	DESCRIPTION	ITEM NO.	PART NO.	DESCRIPTION
1	23-XXXX	AIR CAP *	12	40-XXXX	NEEDLE *
2	33-XXXX	FLUID TIP *	13	60-211	NEEDLE RETURN SPRING
3	60-35	HEAD INSERT	14	60-104	AIR INLET FITTING
4	98-8026	O-RING **	15	60-1319	AIR CONTROL
5	60-137	SEAL **	16	60-2111	TRIGGER
6	60-1301CL	GUN HANDLE	17	60-132	FLUID INLET
7	98-5125	O-RING **	18	60-128	LOCKNUT
8	98-7014	O-RING **	19	60-1315	TRIGGER PIVOT SCREW (2)
9	60-1320	AIR VALVE ASSEMBLY	20	60-1329	NEEDLE SEAL CARTRIDGE **
10	60-1317	SIDE PORT CONTROL			
11	60-1312	FLUID CONTROL KNOB			

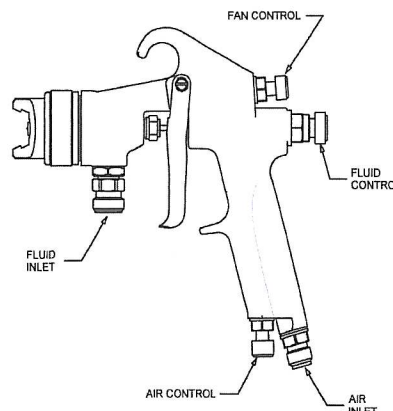
*See Air cap chart page 4

** Indicates part included in repair kit # 10-140

Operation and maintenance for *Fe-Line Fine Finish* spray gun

OPERATION

1. Connect air supply hose at handle of gun.
2. Connect a pressurized fluid supply to gun fluid inlet.
3. Fluid flow can be controlled using the fluid control knob, this restricts flow by limiting needle travel. It is best to control flow by proper selection of fluid orifice size and use the fluid control knob to "fine tune flow rate".
4. Fan width can be adjusted using the fan control knob. Turning the knob clockwise narrows the fan.



MAINTENANCE

IMPORTANT! Routine cleaning and maintenance is essential to insure proper gun operation.

Several states prohibit spraying into the atmosphere and require the use of a covered gun cleaner

1. If a gun cleaner is being used, connect and clean the gun according to the gun cleaner manufactures instructions.
2. If a gun cleaner is not being used:
Remove air cap and clean separately using clean solvent.
Connect a pressurized solvent supply to the fluid inlet, trigger the gun allowing solvent to flow thru the gun until clean.

NOTE: Gun disassembly is not recommended for normal cleaning and maintenance

Gun disassembly and reassembly

Have repair kit #10-140 available before gun disassembly.

Disassembly

1. Remove the trigger by removing both trigger screws (19)
2. Remove fluid control knob (11)
3. Remove needle return spring (13) and needle (12).
4. Remove air valve assembly (9) using a 9/16" wrench.
5. Using a 3/8" wrench remove the needle seal cartridge (20).
6. Using a 13 mm wrench remove the side port control (10)
7. Using a 13 mm wrench remove the air control (15)
8. Using a 11/16" wrench loosen locknut (18), using a 5/8" wrench remove fluid inlet (17)
9. Remove air cap (1), remove fluid tip (2) using a 3/8" wrench.
10. Using a 1" wrench remove head insert (3).

Reassembly

1. Install new O-rings (7) & (8) on air valve assembly, lightly lubricate O-rings with Vaseline and reinstall air valve (9) into gun body.
2. Install new seal (5) in gun body(6). Install new O-ring (4) on head insert(3). Reinstall head insert into gun body and tighten. Reinstall fluid tip (2) and tighten.
3. Install new seal (5) in gun body. Reinstall and tighten fluid inlet (17). Tighten locknut (18) after fluid inlet has been tightened.
4. Install new needle seal cartridge (20).
5. Reinstall side port control (10), air control (15)
6. Reinstall needle (12), needle return spring (13), and fluid control knob (11)
7. Reinstall air cap (1).

FE-Line Fine Finish

FLUID NOZZLE / AIR CAP SELECTION CHART

MATERIAL TYPE	FLUID ORIFICE x AIR CAP	MAX PATTERN WIDTH	CFM
VERY THIN Less than 16 sec. Zahn #2 inks, dyes, solvents, stains	0.8 mm X 23-1308 1.0 mm X 23-1310	11	13.5
Thin 16 to 20 sec. Zahn #2 lacquers, enamels, primers, sealers	1.2 mm X 23-1312 1.3 mm X 23-1313	11	13.5
Medimum 21 to 30 sec. Zahn #2 automotive baes coat, enamels, primers, epoxies, urethanes, automotive clear coat	1.3 mm X 23-1313 1.4 mm X 23-1314 1.5 mm X 23-1315	11	13.5
Heavy OVER 30 SEC. Zahn #2 heavy body primers, high solid enamels, high solid automotive coatings adhesives	1.7 mm X 23-1317	11	13.5